

**Department of  
Family & Community  
Medicine**

University of California,  
San Francisco

**State of the Department**

Kevin Grumbach, MD

Hellman Endowed Professor and Chair

Department of Family & Community Medicine

September 5, 2019

# Overview of DFCM

- \$37.8 million budget 2018-19
  - \$17.5M in extramural grants for research and other programs
- ~400 Faculty members
  - 60 core faculty in SF
  - 50+ additional part-time faculty, joint appts, non-faculty academics
  - >300 volunteer and affiliated residency faculty
- 45 Residents + 3 Chief Residents at ZSFG

# Overview of DFCM

- ~80 UCSF academic staff (+ service center partners)
- >125 clinic staff who are SFDPH or UCSF Medical Center employees



# FCM Executive Council

- Kevin Grumbach (Chair)
- Ron Goldschmidt (Vice-Chair for Academic Affairs)
- Teresa Villela (Vice-Chair, ZSFG Chief of Service)
- Shanice Jackson (Associate Chair)
- Margo Vener (Vice Chair for Education)
- Christine Dehlendorf (Vice Chair for Research)
- Danielle Hessler Jones (Vice Chair for Research)
- Diana Coffa (Residency Director)
- Katherine Strelkoff (UCSF Health Chief of Service)
- Elizabeth Uy-Smith and Maggie Edmunds (FHC Medical Directors)

# FCM Executive Council

- Laura Hill-Sakurai  
(Lakeshore Medical  
Director)
- Lan Pham (ZSFG Unit  
Manager)
- Lealah Pollock (At Large)
- Coleen Kivlahan (At  
Large)
- Erin Hammer (At Large)
- Ivan Gomez (Vice Chair  
Fresno)
- Manuel Tapia  
(Vice Chair for Diversity,  
Equity, Inclusion and Anti-  
Oppression)

# UCSF Department of FCM

- Ranked 5<sup>th</sup> best Department of Family Medicine in the US



- 9<sup>th</sup> ranked Department of Family Medicine in NIH funding

- Primary Care
  - UCSF #3
- Biomedical Research
  - UCSF #5

Only School  
in Top 5 in  
Both  
Categories!



# US Family Medicine Residency Program Rankings 2015

- UCSF FCM @ SFGH #6
- UCSF FCM Residency Program Affiliates at Santa Rosa and Contra Costa/Martinez also in top 10





# UCSF FCM Residency Programs

Family Medicine  
Educational Alliance

**UCSF**



## FAMILY &amp; COMMUNITY MEDICINE RESIDENCY PROGRAM

2019-20

## Chiefs

Maddy Grandy  
MD, MPH  
OHSUAshley Tsang  
MD  
UChicagoTem Woldeyesus  
MD  
UCSF

## PGY 1

Class of 2022

Duron Aldredge  
MD, MHS  
MeharryKrystina Begonia  
MD  
HawaiiCam Candido  
MD  
WashingtonStephanie Chang  
MD, MSc  
BrownCalvin Chin  
MD  
UC DavisSandra Gutierrez  
MD  
UCLA GeffenNew Latthivongkorn  
MD, MPH  
UCSFAnnie Le  
MD, MPH  
UC RiversideThomas Luong  
MD  
UCLA GeffenIrene Ly  
MD, MPH  
UC DavisNoelle Martinez  
MD, MPH  
NorthwesternAJ Millet  
MD  
StanfordJosh Pepper  
MD, MS  
UCSFYoongi Tom  
MD  
UC DavisMaxine Velazquez  
MD, MPH  
UCLA Geffen

## PGY 2

Class of 2021

Crister Brady  
MD, MPH  
UC DavisNico Derr Reyes  
MD, MPH  
UCLA GeffenTalia Eisenstein  
MD  
East CarolinaCaitlin Felder-Heim  
MD  
ColoradoEmily Hunter-Adamson  
MD  
Saint LouisCory Johnson  
MD, MPH  
USCCarolyn Levin  
MD  
MichiganMichelle Lough  
MD, MPH  
UCLA GeffenAwad Mohamed  
MD  
ArizonaAdeola Oni-Orisan  
MD, PhD  
HarvardMike Snavey  
MD  
Washington, St. LouisRachel Stones  
MD  
ChicagoEric Tam  
MD  
UCLA GeffenNhi Tran  
MD, MPH  
UCLA GeffenMengya Wu  
MD  
UCSF

## PGY 3

Class of 2020

Dani Baurer  
MD, MA  
TempleAnya Desai  
MD  
UCSFDJ Freitas  
MD, MPH  
UCSFTara Gonzalez  
MD, MS  
UCSFNicole Gordon  
MD  
QuinnipiacAmulya Iyer  
MD  
ColumbiaEd Kobayashi  
MD  
QuinnipiacElaine Lee  
MD, MPH  
UCSFYuyang Mei  
MD, MS  
UCSFStephen Richmond  
MD, MPH  
UCLA GeffenStephany Rush  
MD  
MorehouseJenni Sneden  
MD, MS  
UCSFLinh Vo  
MD  
UWiscorinKatherine Wei  
MD  
UCSFVera Zeldovich  
MD, PhD  
UCSF

# UCSF SFGH Residency Strategic Measures of Success

- ≥80% of residency graduates practicing primary care 3 years after graduation ✓
- ≥60% of residency graduates practicing in underserved medicine settings 3 years after graduation ✓
- ≥40% of matriculating residents are UIMs
- alumna is appointed Secretary HHS for a and elected to National Academy of Med



# Faculty Additions

- Piali Basu (UCSF Health China Basin)
- Robert Kennedy (UCSF Health China Basin)
- Emilia DeMarchis (Lakeshore and SIREN)
- Mukund Premkumar (Lakeshore and SFGH)
- Josh Bamberger (UCSF Benioff Initiative on Health and Homelessness)
- Jonathan Butler (Professional Researcher)
- Thu Nguyen (SFGH and Center for Health Equity)

# Faculty Additions

- In process:
  - Anusha Vable, Taressa Frazee (Faculty Researchers)
  - Caroline Fichtenberg (Prof Researcher)
  - Raquel Rodriguez (SFGH Faculty)

# Leadership Roles

- Pacific AIDS Education and Training Center
  - Monica U. Hahn, MD, MPH, MS, Clinical Director & Co-PI
  - Prescott Chow, Director and Co-PI
  - James Rouse Iñiguez, MA, MS, Unit Manager
- Dione Johnson, MA, Parnassus/MCB Operations Manager

# Leadership Roles

- Betsy Wan, MD and Erica Brode, MD, FCM 110 Clerkship Co-Directors
- Rita Hamad, Associate Director, Center for Health Equity
- Kirsten Day, Residency Program Director of Diversity, Equity, Inclusion, and Justice Advocacy and Mentorship



# Fond Farewell

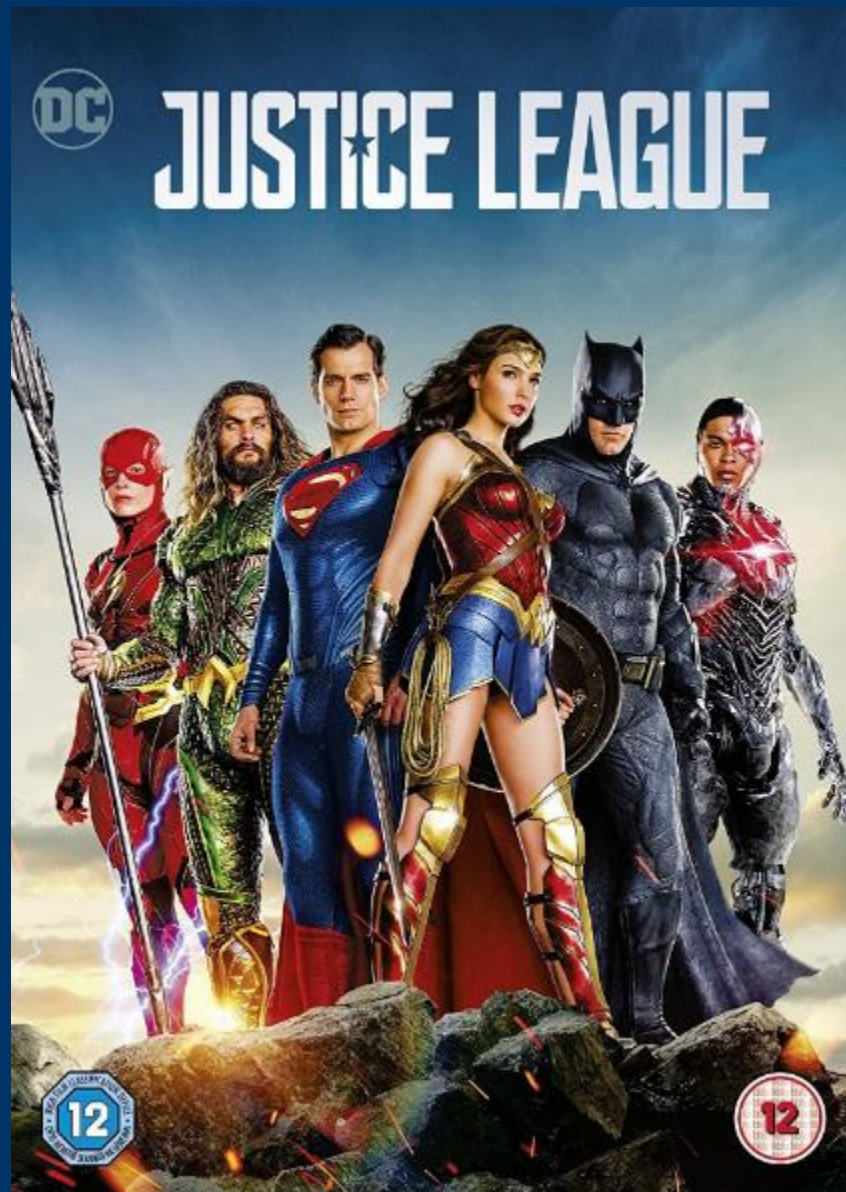
- Lan Pham, FCM@SFGH Manager

# Staff Physician Additions

- Pamela Twu
- Caroline Castillo
- Jonathan Chiang
- Audrey Arai
- Jon Eichelberger
- Eric Tang
- Daphne Miller

# Awards and Recognitions





# American Pharmacists Association Daniel B. Smith Practice Excellence Award

- Betty Dong, Pharm D



# UCSF Health Exceptional Physician Award

## Laura Hill-Sakurai



# 2019 Founders Day Awards Honor Extraordinary Commitment to Public and University Service

By [Nina Bai](#)

---

Jonathan Butler  
Student Award

Dan Ciccarone  
Faculty Award



- Faculty Member Induction to the UCSF Gold Headed Cane Society
  - Margo Vener
- University of Washington School of Medicine Alumni Early Achievement Award
  - Christine Dehlendorf
- ZSFG Medicine Service Robert Lull, MD Award for Non-Medicine Specialty Consultant of the Year
  - Jack Chase
- SOM Bridges Curriculum Outstanding Coach Award
  - Sarah GaleWywrick



# UCSF Academy of Medical Educators Excellence in Teaching Awards

- Erica Brode, MD, MPH
- Kimmy Chela, MD
- Maggie Edmunds, MD
- Kaaren Nelson-Munson, MD
- Hannah Snyder, MD
- Katherine Strelkoff, MD
- Arlin Venturina, MD
- Betsy Wan, MD

- UCSF Hellman Family Award for Early-Career Faculty

– Rachel Willard-Grace, MPH



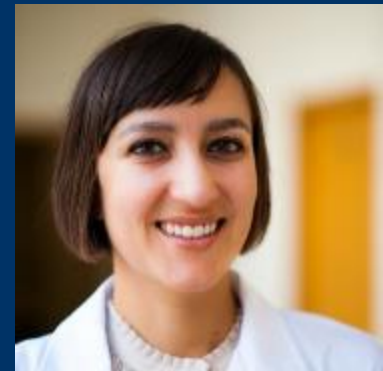
- American Heart Association Career Development Award

– Anusha Vable



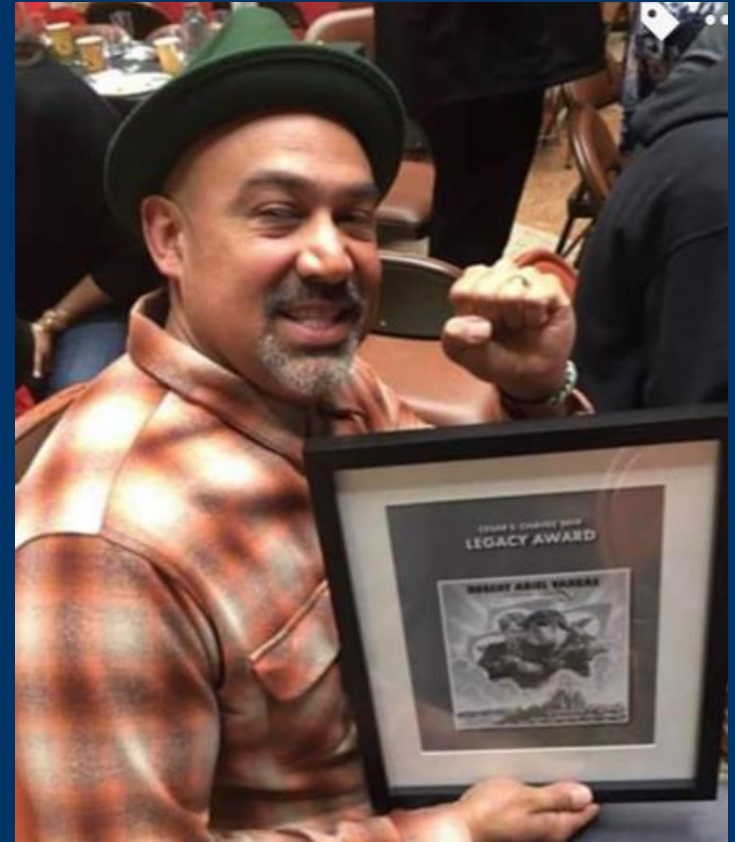
- NIH/UCSF KL2 Career Development Award

– Anjana Sharma



# Roberto Ariel Vargas

-Mission Neighborhood  
Centers Cesar E Chavez  
Legacy Award



# 40 CHANGEMAKERS

- Manuel Tapia
- Roberto Vargas



# 2019 FCM SOM STAR Achievement Awardees

## 1/6 of SOM Achievement Awards to FCM Staff!

- Ababon, Anthony
- Abascal, Brian
- Ambadekar, Deirdre
- Azucar, Marcella
- Brillante, Miranda
- Cabrera Marquez, Adriana
- Chen, Victoria
- Chirinos, Chris
- Fox, Edith
- Goldhammer, Brenda
- Gruta, Cristina
- Gusman, Nicole
- Hammer, Erin
- Huang, Beatrice
- Johnston, Roy
- Jones, Danielle
- Knox, Margae
- Labat, Ebony
- Mackey, Cindy
- Manaois, Angel
- Marquez, Alberto
- Newstetter, Amanda
- Osorio, Lori
- Overton, Tenja
- Reed, Reiley
- Remy, Linda
- Riordan, Sarah
- Rouse, James
- Sell, Amanda
- Shatara, Adrienne
- Stephan, Louise
- Stupar, Lauren
- Thomas, Jill
- Warren, Nancy
- Warren, Marliese
- Wilson, Whitney
- Wright, Jadawn
- Yu, Sylvia

# 2019 FCM SOM SPOT Awardees

- Bowyer, Vicky
- Chan, Antonio
- Chin, Alice
- Cruz, Precy
- Cummins, Jo
- Dela Fuente, Agnes
- Delos Santos, Reina
- Fernandez, Larry
- Fleisher, Paula
- Foster, Tom
- Gomez, Lisa Georgetti
- Kikuchi, Diane
- Labat, Alanna
- Lazar, Laura Marie
- Lew, Tiffany
- Mejia, Patricia
- Mo, Mari
- Morris, Portia
- Shah, Monisha
- Weber, Shannon

# Investing in DFCM Academic Staff Professional Development

- New initiative in FY20: DFCM funds for staff professional development expenses

The New York Times

# The Dangerous Rise of the IUD as Poverty Cure

The notion that limiting women's reproduction can cure societal ills has a long, shameful history.

**By Christine Dehlendorf and Kelsey Holt**

Drs. Dehlendorf and Holt are researchers with the [Person-Centered Reproductive Health Program](#) at the University of California, San Francisco.

Jan. 2, 2019





July 13, 2019

The New York Times

DEADLY GERMS, LOST CURES

## *Urinary Tract Infections Affect Millions. The Cures Are Faltering.*



Dr. Eva Raphael, a primary care physician at San Francisco General Hospital, said one of her patients returned to the emergency room after a drug-resistant U.T.I. spread to her kidney. "It makes me wonder what the world looked like for women before antibiotics, and wonder if we're going to see that now," she said. Brian L. Frank for The New York Times

# HIV Specialist

## 10 Providing Primary Care for Patients with HIV Updates and Current Practices

BY EVA RAPHAEL, ARIEL FRANKS, JOSH CONNOR, KENJI TAYLOR, AND CAROLYN CHU, MD, AAHIVS

## 18 Special Considerations

The Care of Women and Gender Variant Patients Living with HIV

BY MONICA HAHN, MD, MPH, MS, AAHIVS, LEALAH POLLOCK, MD, MS, AAHIVS, AND DANI BAURER, MD, MA

# FCM Productivity: Babies!

## Faculty

- Taylor Tomlinson

## Staff and ZSFG Partners

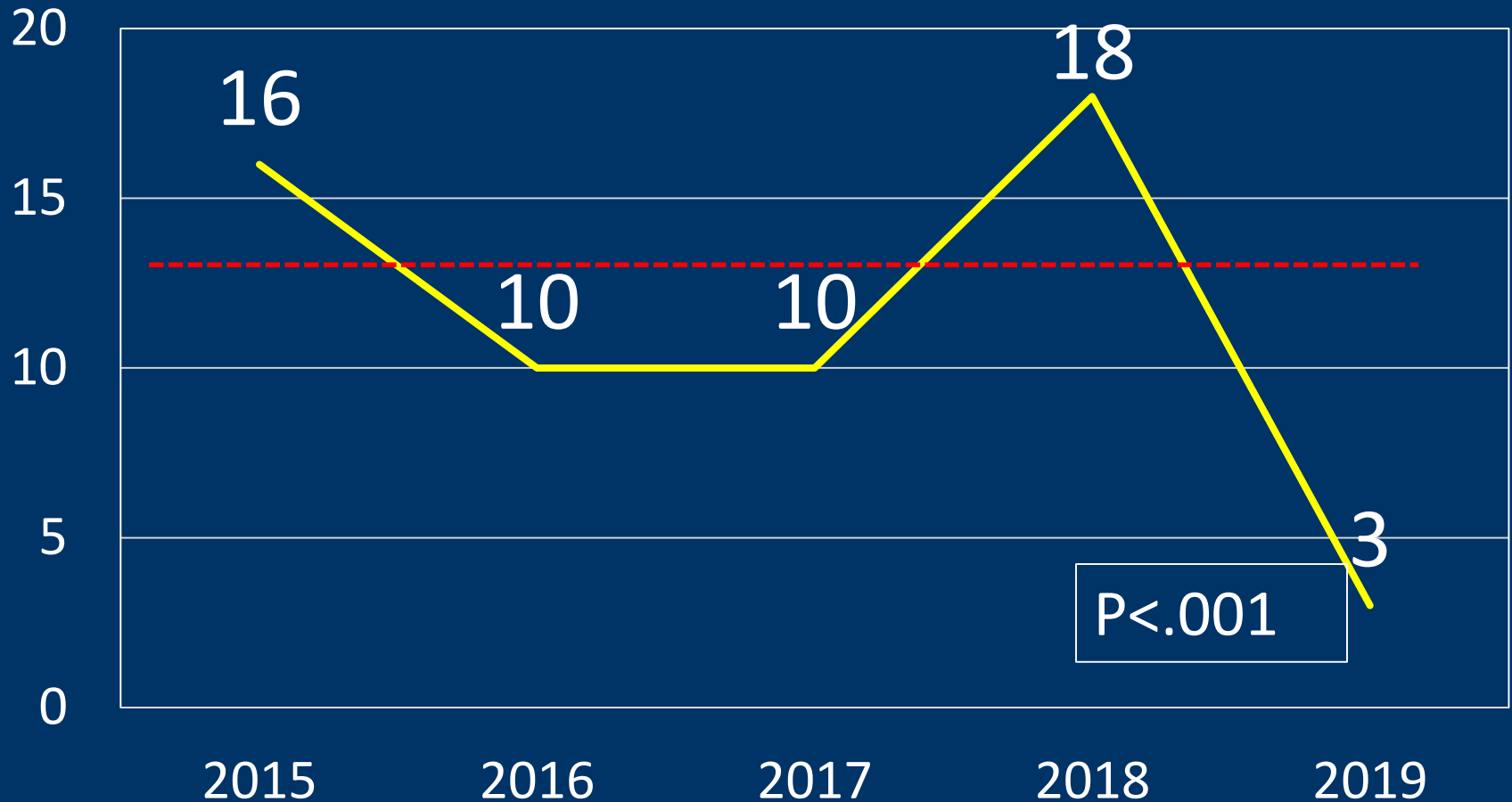
- Sara Seibold

## Residents

- Maddie Grandy



# FCM Babies per Year

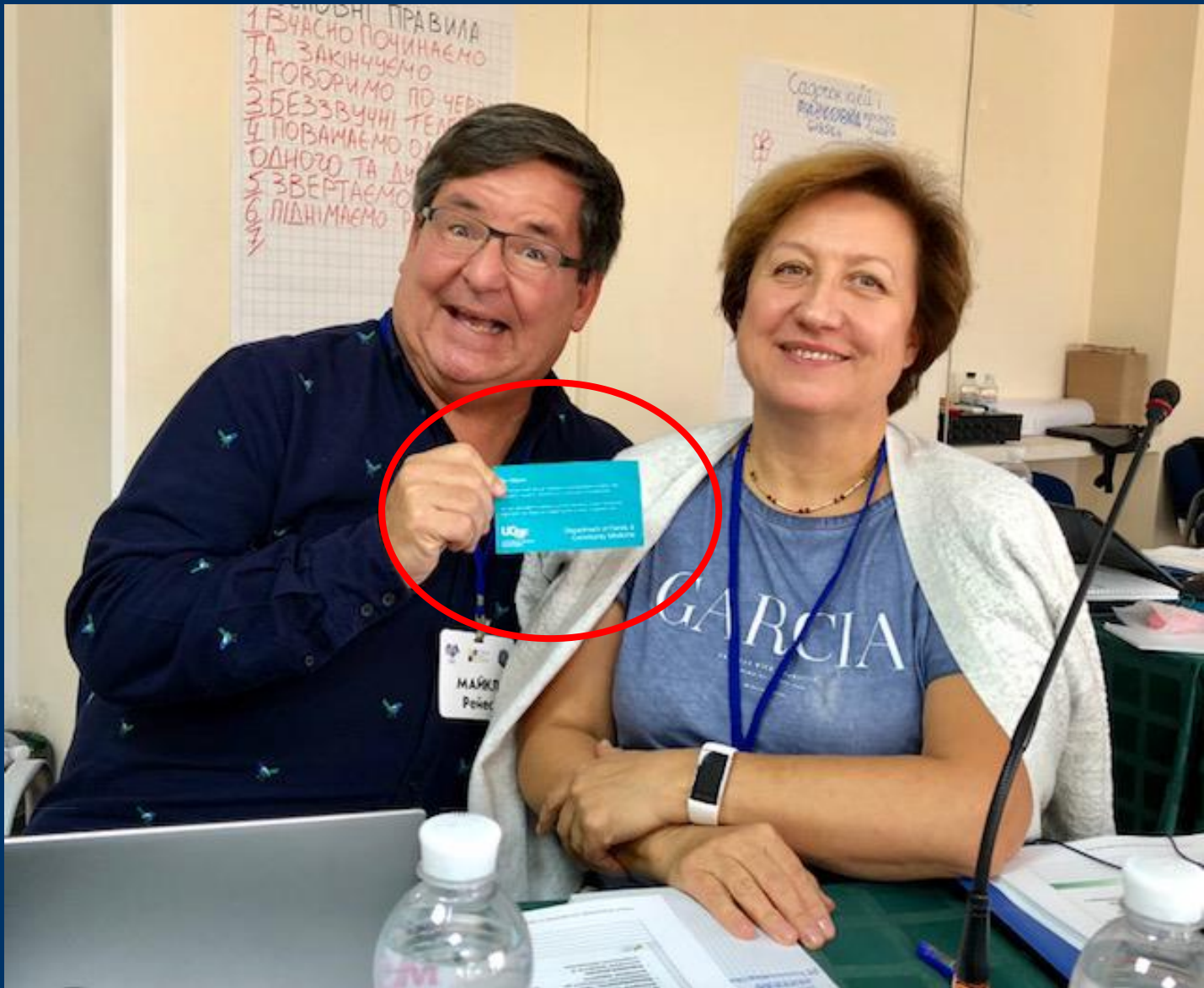


# Why Are They Smiling?

## Person-Centered Reproductive Health Program



# DFCM Mission, Vision, and Strategic Goals



# DFCM Mission Statement

Our mission is to improve health through excellence and innovation in patient care, education, research, advocacy, and community empowerment.

We are dedicated to building a just and equitable society, recognizing that health and illness are shaped by the contexts of people's lives.



# To accomplish our mission, we:

- Provide comprehensive care built on trusting and healing relationships with individuals, families, and communities.
- Educate learners in the principles and practice of family and community medicine, emphasizing the interconnectedness of people and systems.

# To accomplish our mission, we:

- Advance and apply knowledge in patient care, population health, community engagement, and public policy.
- Promote a culture of inclusion, mutual support, and meaningful work.

# DFCM Vision

A family and community medicine model leads improvement in health care, health, and health equity.



What are we gonna do tonight, Brain?  
Same thing we do every night, Pinky. Try to take over the world.

# Progress on DFCM Strategic Goals



# Facilities

- Space: The final frontier
- These are the voyages of the Starship, Enterprise
- Its 5 year mission
- To explore strange new worlds
- To seek out new life and new civilizations
- To boldly go where no man has gone before



# Opening of New SFGH Urgent Care Center in Building 5



# Space and Facilities

- Patient Care
  - New UCSF Health Primary Care clinics (San Mateo 2020, Mission Bay 2021)
  - SFGH Family Health Center moving to Building 5 (2022)
- Integration and Colocation of Research and Academic Programs
  - Center for Health Equity moving to Parnassus MUE3 (winter 2019)
  - New Research and Academic Building at SFGH (2022)



# Patient Care



# UCSF Health PRIME Quality Metrics

	BREAST CANCER SCREENING			CERVICAL CANCER SCREENING			COLORECTAL CA SCREENING			TOBACCO SCREENING			DIABETES HbA1c SCREENING			HTN BP CONTROL			IVD w/ ANTITHROMBOTIC		
	DENOM	90th% TARGET	DIFFERENCE	DOM	90th% TARGET	DIFFERENCE	DOM	90th% TARGET	DIFFERENCE	NUMERATOR	90th% TARGET	DIFFERENCE	DOM	90th% TARGET	DIFFERENCE	NUMERATOR	90th% TARGET	DIFFERENCE	NUMERATOR	90th% TARGET	DIFFERENCE
	77.17%	71.44%	● 5.7%	73.91%	69.83%	● 4.1%	75.49%	65.71%	● 9.8%	97.56%	96.19%	● 1.4%	21.96%	29.36%	● 7.4%	77.97%	70.41%	● 7.6%	88.39%	91.73%	● -3.3%
<b>DEPARTMENT</b>																					
GERIATRIC CARE	80.00%	70.29%	● 9.7%				84.47%	64.87%	● 19.6%	99.73%	96.53%	● 3.2%	9.52%	29.07%	● 19.6%	85.57%	71.69%	● 13.9%	92.47%	91.73%	● 0.8%
LAKESHORE	79.97%	70.29%	● 9.7%	76.97%	70.80%	● 6.2%	79.72%	64.87%	● 14.8%	97.63%	96.53%	● 1.1%	16.73%	29.07%	● 12.4%	81.52%	71.69%	● 9.8%	90.00%	91.73%	● -1.7%
PRIMARY CARE CB BE	74.02%	70.29%	● 3.7%	75.37%	70.80%	● 4.6%	70.58%	64.87%	● 5.7%	97.98%	96.53%	● 1.5%	26.00%	29.07%	● 3.1%	75.58%	71.69%	● 3.9%	88.37%	91.73%	● -3.3%
PRIMARY CARE LV	72.82%	70.29%	● 2.5%	73.14%	70.80%	● 2.3%	74.01%	64.87%	● 9.1%	97.75%	96.53%	● 1.3%	25.00%	29.07%	● 4.1%	77.35%	71.69%	● 5.6%	76.67%	91.73%	● -15.0%
WOMENS HEALTH M	84.73%	70.29%	● 14.4%	83.04%	70.80%	● 12.2%	76.70%	64.87%	● 11.8%	98.61%	96.53%	● 2.1%	24.14%	29.07%	● 5.0%	78.23%	71.69%	● 6.5%	82.61%	91.73%	● -9.1%



# FHC Adolescent Immunizations



## Adolescent Immunizations

% of active panel patients age 13 years old in the past 1 year who received

\* MCV, Tdap/Td, and HPV: a meningococcal vaccine on or between their 11th and 13th birthday, one Tdap or Td vaccine on or between their 10th and 13th birthday, and at least two HPV vaccines between their 9th and 13th birthday

\* MCV and Tdap/Td: a meningococcal vaccine on or between their 11th and 13th birthday

\* HPV: at least two HPV vaccines between their 9th and 13th birthday

Select PCC

FHC

Select Start Month

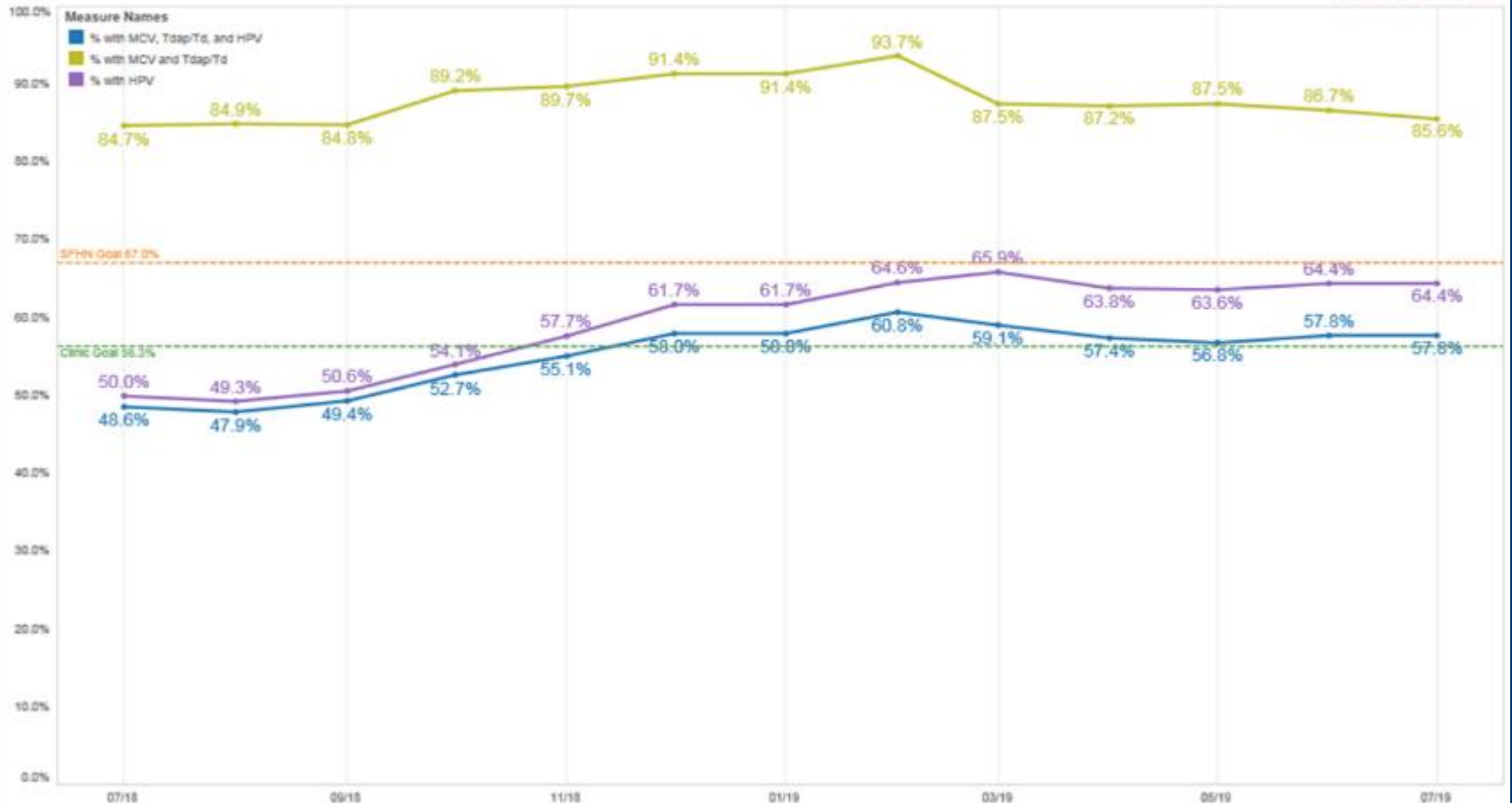
July, 2018

Select End Month

July, 2019

# to goal July, 2019 **0**

\* Calculated using FY18-19 goal



# FHC Safe Opiate Prescribing



## Opioid Safety - A Cures Report, a Pain Agreement, and a Urine Drug Test

% of PC active patients with chronic pain on chronic opioids who had A Cures Report, a Pain Agreement, and a Urine Drug Test in past 1 year.

Select PCC

FHC

Select Measure

A Cures Report, a Pain Agreem...

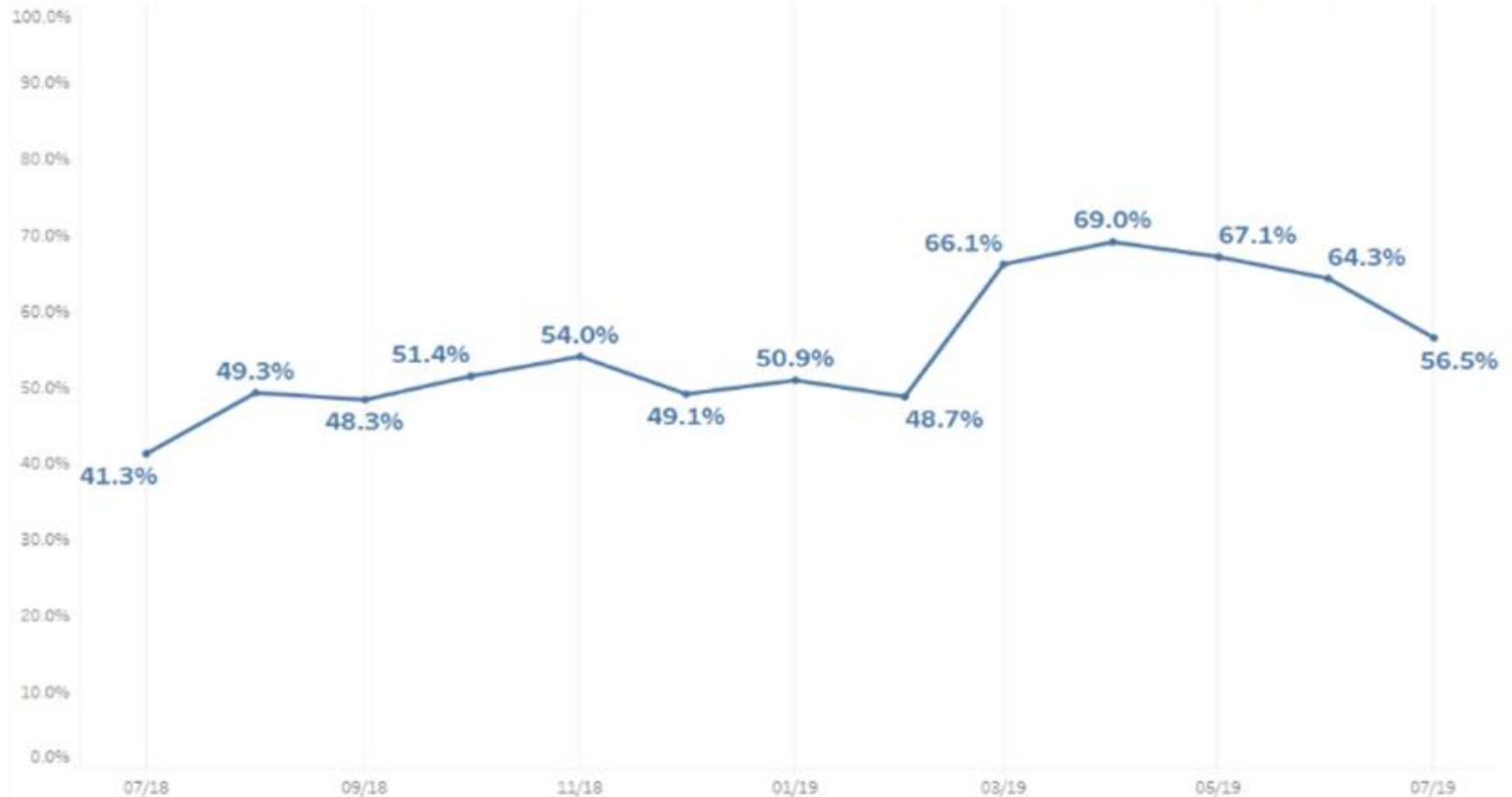
Select Start Month

July 2018

Select End Month

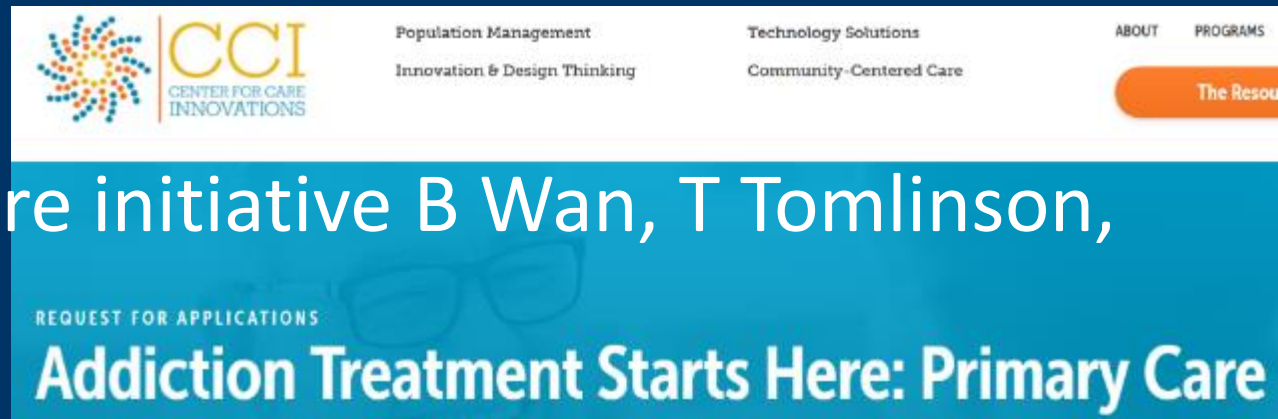
July 2019

# to goal July 2019 \_ None



# Leadership in Patient Care of People with Substance Use Disorders

- FCM SFGH teams for inpatient and outpatient care



- New Lakeshore initiative B Wan, T Tomlinson, M Potter

- Hannah Snyder, Co-PI Statewide BRIDGE Program for 30+ CA hospitals



# Continuity



In UCSF Health and SFHN Primary Care Clinics, turnover rates over 2-3 years:

- Clinicians 30%
- Staff 41%

# Longitudinality and Relationships



# Vision, Voice, Leadership:

## How Patients Partner to Transform Health Systems

**UCSF** Department of  
Family & Community  
Medicine



Jack Rodnick Colloquium  
Golden Gate Club, San Francisco  
May 30, 2019

# Patient and Community Engagement



# Standing Up for Families and Communities



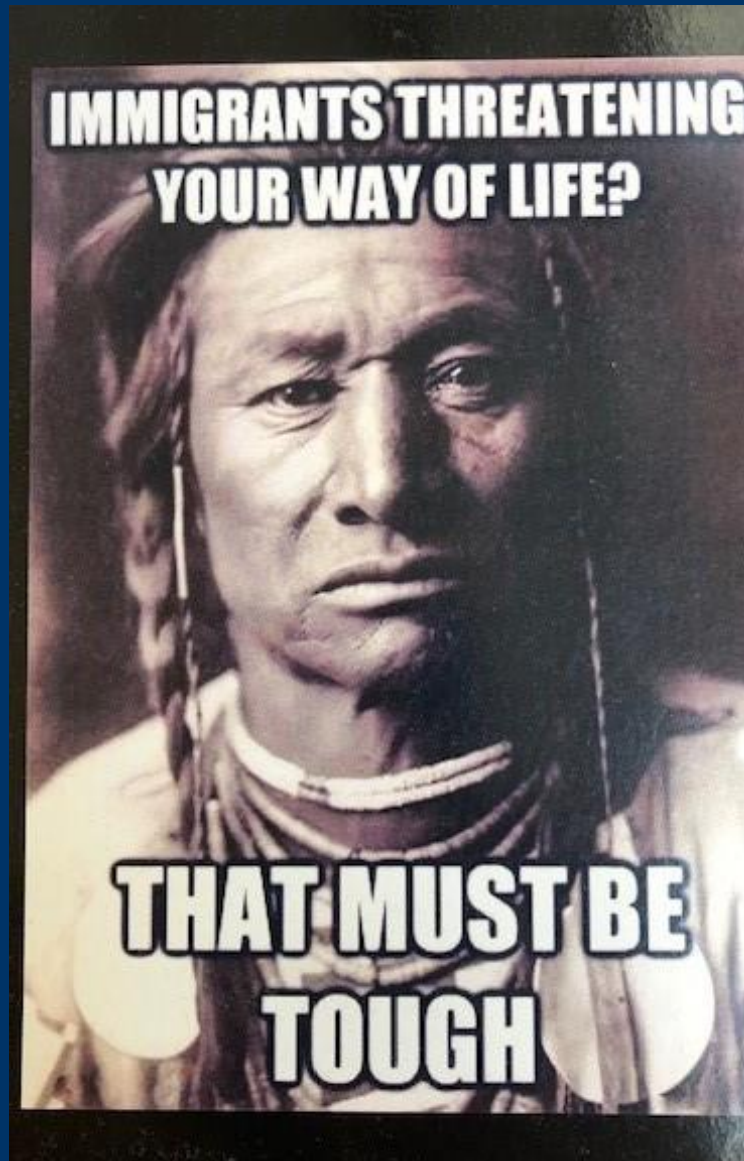
# New UCSF Health and Human Rights Initiative

## Human Rights Clinic as Phase 1

- Clinical evaluations for forensic cases for asylum seekers
- Training and education
- Community partnerships
- Advocacy

# Refugee Clinic and Newcomers Health Program

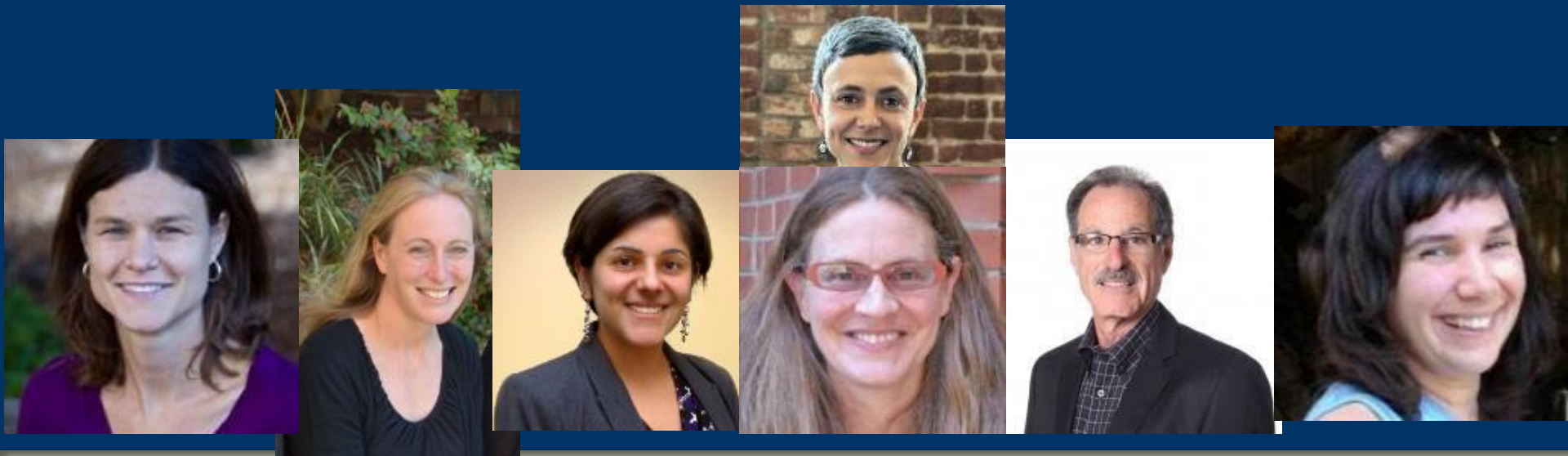




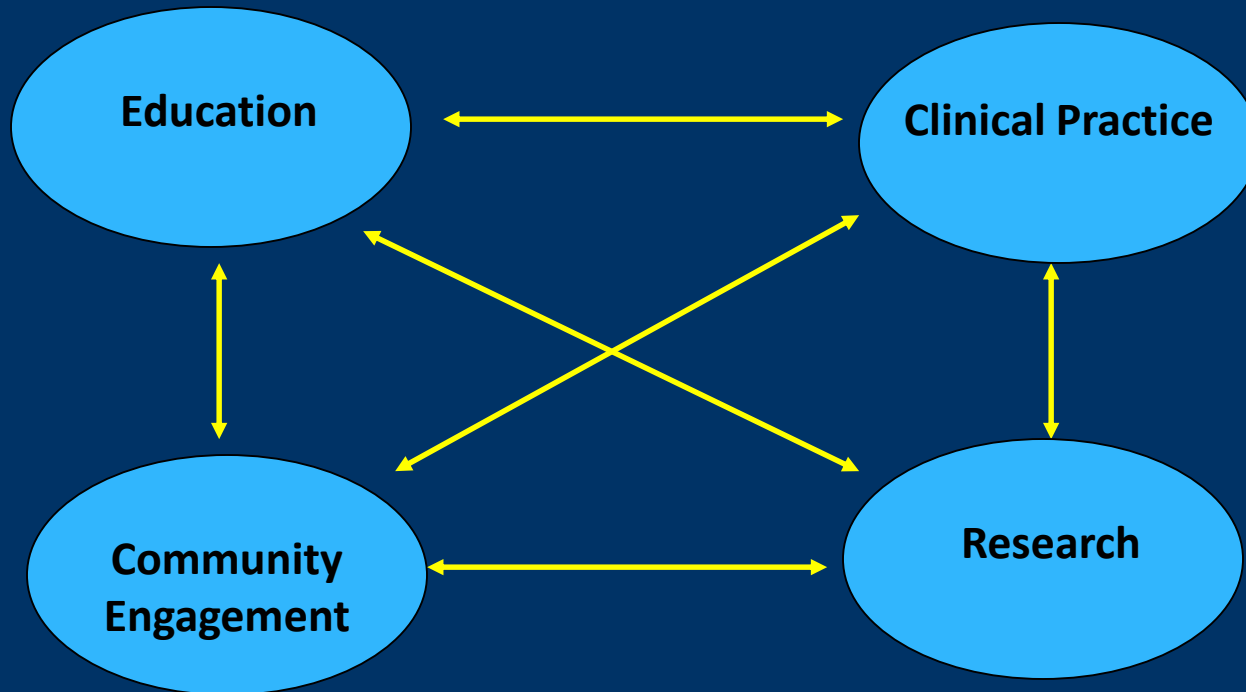
# FCM Research


- Spectacularly productive and impactful
- Exciting infusion of new talent

# Major R01 Equivalent Grant Awards in Past Year



# DFCM Synergy





# The Last Black Man in San Francisco

“Heart-skippingly gorgeous  
and exultant.”

*Manohla Dargis, THE NEW YORK TIMES*



A21





Thank you!

To the Family and Community of  
the Department of Family and  
Community Medicine